

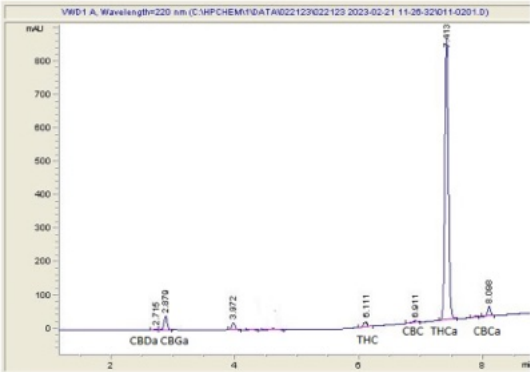
Sample 681-092920-714

White Cherry Zlurpee THCa Hemp Flower
Sample Submitted: 09-29-2024; Report Date: 09-29-2024

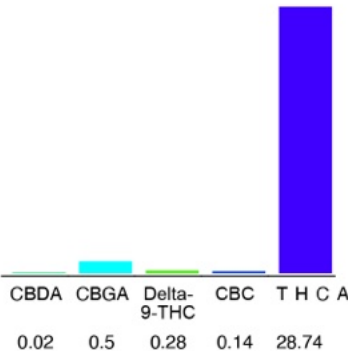
White Cherry Zlurpee THCa Hemp Flower

Plant Material: Flower

Chromatogram



Cannabinoid Profile



Cannabinoid Profile by HPLC

0.28%

Delta-9-THC

0.08%

CBD

28.74%

Total Cannabinoids

| Cannabinoid | % wt | mg/g |
|---|--------|--------|
| CBDA | 0.06 | 0.6 |
| CBGA | 0.4 | 4.2 |
| Delta-9-THC | 0.29 | 2.9 |
| CBC | 0.18 | 1.8 |
| THCA | 28.74 | 287.4 |
| Total Cannabinoids | 287.44 | 287.44 |
| Calculated Delta-9-THC Yield | 27.68 | 276.81 |
| Calculated CBD Yield | 0.08 | 0.82 |
| Calculated Maximum Delta-9-THC Yield = Delta-9-THC + 0.877 * THCA | | |
| Calculated Maximum CBD Yield = CBD + 0.877 * CBDA | | |

Marin Analytics, LLC
250 Bel Marin Keys Blvd, Suite D4
Novato, CA 94949

415-936-6477 / sarabiancalana1@gmail.com

Sara Biancalana
Sara Biancalana
Chief Scientist