

Sample 684-010625139

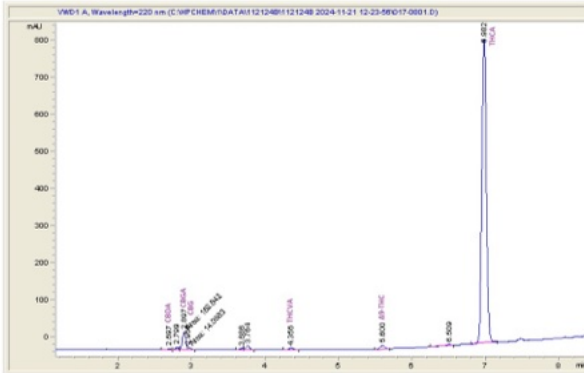
Tangy Skunk IN

Sample Submitted: 01-02-2025; Report Date: 01-06-2025

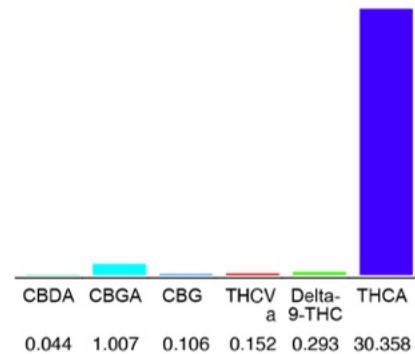
## Tangy Skunk IN

Plant Material: Hemp Flower

### Chromatogram



### Cannabinoid Profile



### Cannabinoid Profile by HPLC

0.29%

Delta-9-THC

0.00%

CBD

31.96%

Total Cannabinoids

Cannabinoid	% wt	mg/g
CBDA	0.044	0.44
CBGA	1.007	10.07
CBG	0.106	1.06
THCva	0.152	1.52
Delta-9-THC	0.293	2.93
THCA	30.36	303.58
<b>Total Cannabinoids</b>	<b>31.96</b>	<b>319.6</b>
<b>Calculated Total THC</b>	<b>22.88</b>	<b>228.83</b>
<b>Calculated CBD Yield</b>	<b>0.05</b>	<b>0.45</b>

Calculated Total THC = Delta-9-THC + 0.877 \* THCA

Calculated Maximum CBD Yield = CBD + 0.877 \* CBDA

**Marin Analytics, LLC**  
250 Bel Marin Keys Blvd, Suite D4  
Novato, CA 94949

833-321-TEST / info@marinanalytics.com

**Mike Clemmons**  
Lab Manager