

Sample 680-060524564

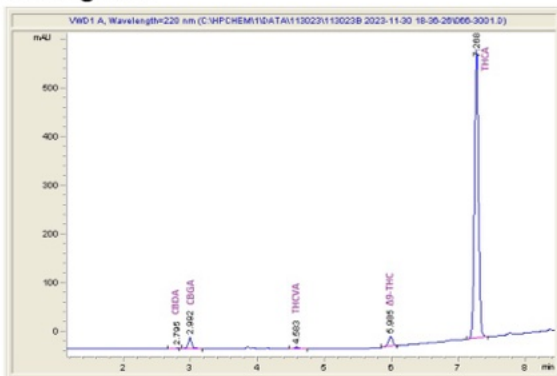
Pink Runtz (THCA Hemp Flower)

Sample Submitted: 04-30-2024; Report Date: 05-06-2024

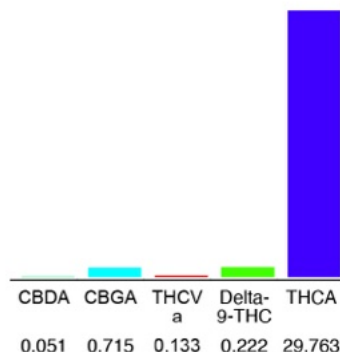
## Pink Runtz (THCA Hemp Flower)

Plant Material: Hemp Flower

### Chromatogram



### Cannabinoid Profile



### Cannabinoid Profile by HPLC

0.22%

Delta-9-THC

0.00%

CBD

30.91%

Total Cannabinoids

Cannabinoid	% wt	mg/g
CBDA	0.051	0.51
CBGA	0.625	6.25
THCVa	0.133	1.33
Delta-9-THC	0.222	2.22
THCA	29.33	293.33
<b>Total Cannabinoids</b>	<b>30.91</b>	<b>309.1</b>
<b>Calculated Total THC</b>	<b>28.13</b>	<b>281.33</b>
<b>Calculated CBD Yield</b>	<b>0.05</b>	<b>0.47</b>
Calculated Total THC = Delta-9-THC + 0.877 * THCA		
Calculated Maximum CBD Yield = CBD + 0.877 * CBDA		

**Marin Analytics, LLC**  
250 Bel Marin Keys Blvd, Suite D4  
Novato, CA 94949

833-321-TEST / info@marinanalytics.com

**Mike Clemmons**  
Lab Manager