

Sample 682-080425102

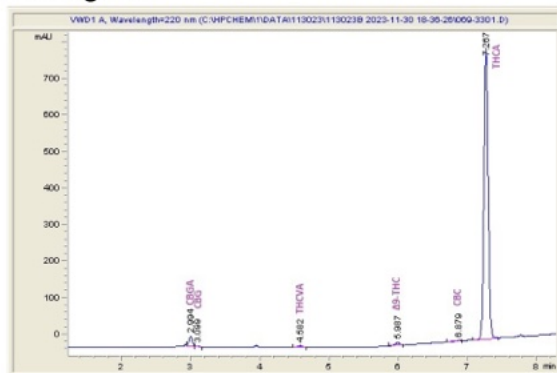
Gooru (THCA Hemp Flower)

Sample Submitted: 04-08-2025; Report Date: 04-08-2025

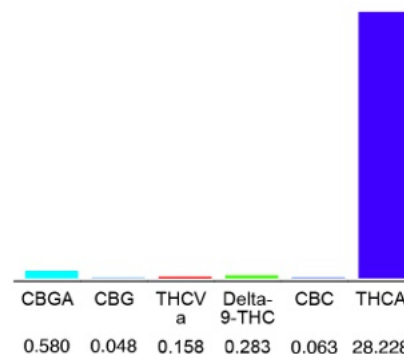
### Gooru (THCA Hemp Flower)

Plant Material: Hemp Flower

#### Chromatogram



#### Cannabinoid Profile



#### Cannabinoid Profile by HPLC

0.28%

Delta-9-THC

0.00%

CBD

29.36%

Total Cannabinoids

Cannabinoid	% wt	mg/g
CBGA	0.580	5.80
CBG	0.048	0.48
THCVa	0.158	1.58
Delta-9-THC	0.283	2.83
CBC	0.063	0.63
THCA	28.23	282.28
<b>Total Cannabinoids</b>	<b>29.36</b>	<b>293.6</b>
<b>Calculated Total THC</b>	<b>25.43</b>	<b>254.31</b>
<b>Calculated CBD Yield</b>	<b>0.00</b>	<b>0.00</b>

Calculated Total THC = Delta-9-THC + 0.877 \* THCA

Calculated Maximum CBD Yield = CBD + 0.877 \* CBDA

**Marin Analytics, LLC**  
250 Bel Marin Keys Blvd, Suite D4  
Novato, CA 94949

833-321-TEST / info@marinanalytics.com

**Mike Clemmons**  
Lab Manager