

### Sample 681-112124-482

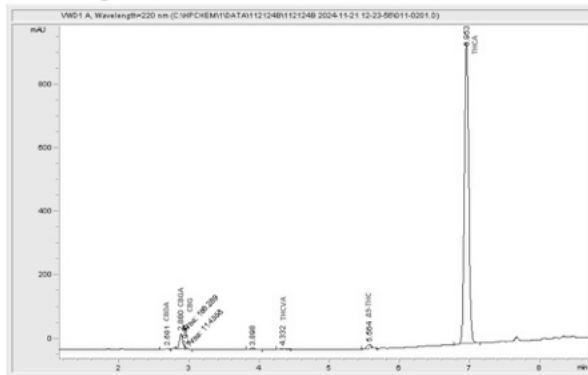
Georgia Pie

Sample Submitted: 11-21-2024; Report Date: 11-27-2024

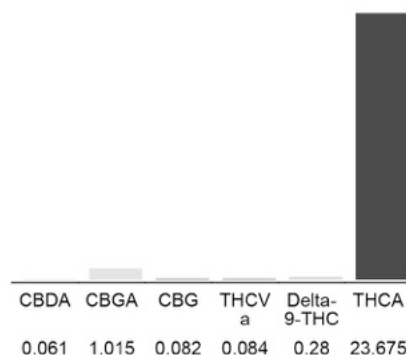
## Georgia Pie

Plant Material: Hemp Flower

### Chromatogram



### Cannabinoid Profile



### Cannabinoid Profile by HPLC

0.28%

Delta-9-THC

0.00%

CBD

25.20%

Total Cannabinoids

Cannabinoid	% wt	mg/g
CBDA	0.061	0.61
CBGA	1.015	10.15
CBG	0.082	0.82
THCVa	0.084	0.84
Delta-9-THC	0.28	2.8
THCA	23.68	236.75
<b>Total Cannabinoids</b>	<b>25.20</b>	<b>252.0</b>
<b>Calculated Total THC</b>	<b>21.04</b>	<b>210.43</b>
<b>Calculated CBD Yield</b>	<b>0.05</b>	<b>0.53</b>

Calculated Total THC = Delta-9-THC + 0.877 \* THCA

Calculated Maximum CBD Yield = CBD + 0.877 \* CBDA

**Marin Analytics, LLC**  
250 Bel Marin Keys Blvd, Suite D4  
Novato, CA 94949

833-321-TEST / info@marinanalytics.com

**Mike Clemmons**  
Lab Manager